

# DRUMAHOE STEERING GROUP

COMMUNITY SURVEY RESULTS



JANUARY 2008

## **BACKGROUND TO DRUMAHOE**

The Drumahoe area was particularly renowned for its mills, utilising the natural resource of the river.

In the 20th century, over a dozen mills prospered in the area - the most famous being Clarkes at Drumahoe House and at one stage the mill provided electricity for the Drumahoe area. These corn and flour mills are long gone and for a time, were replaced by new industries like Desmond's shirt factories and others. They have also gone and have left an unsightly scar on the landscape!

Some reclamation has taken place and a new drainage system has dried up old burns and lowered the level of the Faughan, while new houses have brought considerable pressure on existing facilities and the threat to the village atmosphere continues to grow steadily.

# CONTENTS

- 1.0 The Survey
- 2.0 Summary of Results
- 3.0 The Way Forward
- 4.0 Action Plan

APPENDIX 1      1. Copy of Questionnaire

# **SECTION 1**

## **1.0 THE SURVEY**

### **1.1 Reason for Survey**

At a formation meeting held on 19th October 2007 in Drumahoe Primary School, a Steering Group was formed with a view to establishing a Community Association in the area.

The participants felt strongly about a number of issues in the area and decided to formulate and carry out a survey.

### **1.2 Purpose of Survey**

The purpose of the survey was to assess the local residents' view of the various services and highlight areas of concern. It was also planned to assess the support for the formation of a Community/Residents Association in the area.

### **1.3 Survey Methodology**

The survey questionnaire was designed and analysed by the Steering Group with the assistance of Supporting Communities NI (S.C.N.I.). Photocopying was provided courtesy of N.I. Housing Executive. A flyer was attached to all surveys to highlight the reason for conducting the exercise.

The questionnaires were delivered to all households in the area in November 2007 by members of the Steering Group.

The return rate for questionnaires was 33%

## SECTION 2

### 2.0 SUMMARY OF RESULTS

#### 2.1 Length of Residency

2.1.1 The survey revealed that the largest percentage of respondents, 49% have lived in the Drumahoe area for more than 20 years.

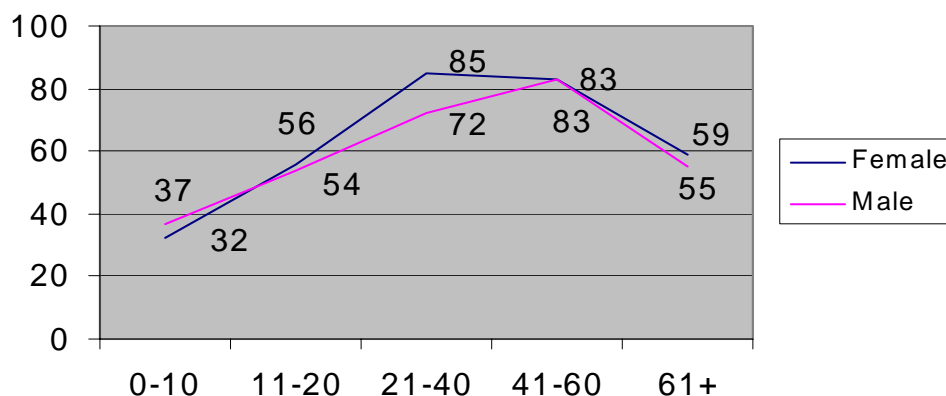
**Table 1**

<b>PERIOD OF TIME</b>	<b>%</b>
<b>0 - 5 years</b>	<b>15</b>
<b>5-10 years</b>	<b>13</b>
<b>10-15 years</b>	<b>13</b>
<b>15-20 years</b>	<b>10</b>
<b>20 years +</b>	<b>49</b>

#### 2.2 Household Details

2.2.1 The age profile of household members who completed this question are shown in Figure 1. It shows that the largest difference between male and female exists in the 21-40 year old band.

**Figure 1**

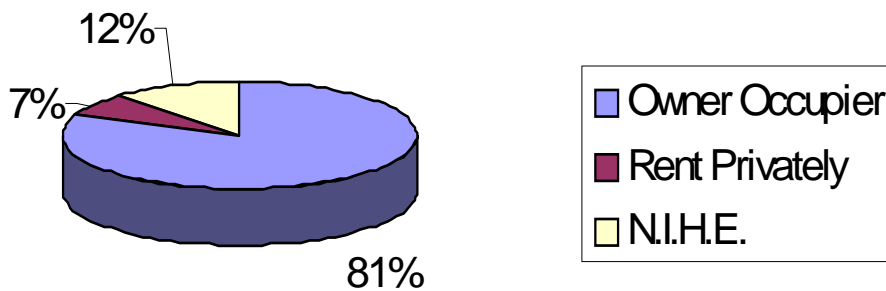


No questions were asked in relation to economic status of Head of Household or other members.

## 2.3 Tenure

For those households who completed the question relating to tenure it was found that 81% were owner occupiers, 12% rented from N.I. Housing Executive and 7% rented privately.

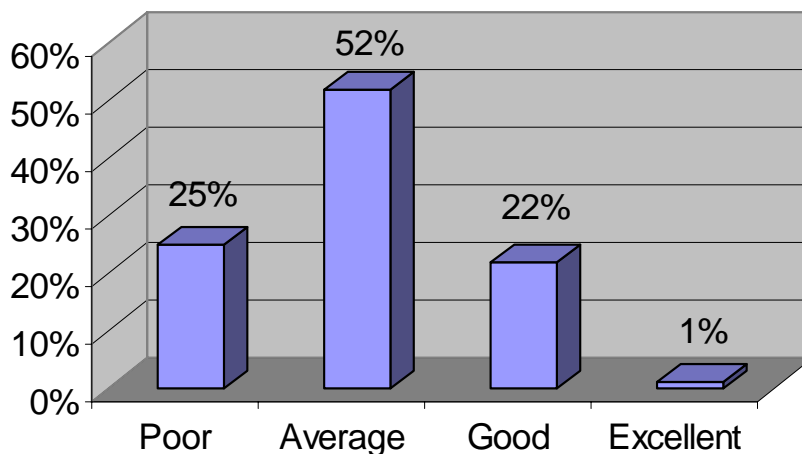
**Figure 2**



## 2.4 Community Spirit

2.4.1 When asked how they felt about the level of Community Spirit in Drumahoe, the respondents stated as shown in Figure 3.

**Figure 3**



2.4.2 Only 1% of the respondents surveyed felt that Community Spirit in the Drumahoe area is excellent.

## 2.5 Residence Association

2.5.1 The Drumahoe area has no Residents/Community Group. Therefore to gauge if respondents were interested in setting up such a group, each were asked if they thought this would be beneficial to the area and if they would be interested in joining such a group.

2.5.2 93% of the respondents felt that the area would benefit from the setting up of a Residents or Community Group. Additionally 40% of all respondents would be interested in joining such a group.

## 2.6 Area Services

2.6.1 Those surveyed were asked their opinion on a range of services provided within the area. A complete breakdown is shown in Table 2.

**Table 2**

<b>SERVICES</b>	<b>GOOD %</b>	<b>BAD %</b>
Bus Shelters	6	<b>94</b>
Facilities for Senior Citizens	7	<b>93</b>
Facilities for Unemployed	9	<b>91</b>
Play Areas	15	85
Youth Activities	18	82
Litter Bins	21	79
Policing	23	77
Road Gritting	54	46
Mobility Access to Footpaths	61	39
Maintenance of Grass Areas	64	36
Bus Services	77	23

2.6.2 A number of services in the Drumahoe area were highlighted as causing concern. The services causing most concern included bus shelters, facilities for senior citizens and facilities for the unemployed.

2.6.3 Comments made in relation to this question:

- Grassed areas are not attended to enough
- Bus Services are not frequent enough
- Children have no shelter waiting for the bus
- There are no play areas
- No activities for the youth, senior citizens or unemployed
- No litter bins provided
- No visible police on the ground
- Underage drinking
- No wheel chair access
- Policing could be better
- Residential areas need gritted
- No sunday bus service
- Community Police is essential
- Underage drinking at Play Areas
- Little to do for the Youth
- Village looks poorly kept
- Vandalism to the play areas
- Community garden, landscaping at river
- Bus service at Arndabrocky



## 2.7 Facilities

2.7.1 Those surveyed were asked their opinion on the need for activities provided within the Drumahoe area. The results are shown in Table 3.

**Table 3**

ACTIVITY	CURRENTLY ATTEND	INTERESTED IN ATTENDING	NO INTEREST IN ACTIVITY
Computer Classes	9	<b>109</b>	30
Health Info/Advice	4	<b>104</b>	24
Adult Education	1	<b>98</b>	37
Keep Fit	11	<b>97</b>	24
Welfare Rights Advice	1	<b>90</b>	33
Craft Classes	3	80	46
Cookery	4	79	38
Womens Group	7	73	50
Yoga	4	67	41
Senior Citizens Group	5	66	57
Flower Arranging	4	62	58
Youth Club	13	57	55
Indoor Football	4	52	48
Snooker	3	50	52
Drop In Club	1	43	56
Line Dance Classes	4	35	78
After Schools Club	4	31	64
N.I.H.E. Advice for Tenants	1	30	69
Unemployment Club	0	6	85

2.7.2 Respondents highlighted a number of activities they would be interested in attending if provided, of which included computer classes, health information/ advice and adult education.

### 2.7.3 Comments made in relation to this question:

- Maths and English classes needed
- A good location for a park is Faughan Valley School Grounds
- Hockey
- Family events
- A women's group is needed
- Playgroup
- Green area to play football, rugby and cricket
- Drama classes
- Knitting classes

## 2.8 Issues of Concern

2.8.1 A list of issues which the Steering Group felt to be problematic within the area were identified and respondents were asked to comment whether they were concerned or 'not concerned' about them. Table 4 shows the results.

**Table 4**

<b>ISSUE</b>	<b>RANK</b>	<b>CONCERNED</b>	<b>NOT CONCERNED</b>
		<b>%</b>	<b>%</b>
Dog Fouling	1	93	7
Speeding Vehicles	2	90	10
Drinking/Loitering	3	89	11
Underage Drinking	4	85	15
Litter	5	77	23
Drugs/Solvent Abuse	6	69	31
Vandalism	7	63	37
Illegal Dumping	8	60	40
Noisy Parties	9	45	55

2.8.2 A number of issues were highlighted as causing concern within the area. The issues causing most concern were dog fouling and speeding vehicles. The issue causing least concern was noisy parties.

2.8.3 Comments made in relation to this question:

- A new playground is needed for the children
- A skip facility is needed in the area
- Dog fouling bins need located in the area
- A number of respondents raised concerns regarding the future of Faughan Valley School - no need for more housing
- Concerns raised regarding bonfires
- Stone throwing and bullying are a concern
- Youths loitering
- Speeding vehicles in the village
- Beeches - future plans
- Christmas tree in the village
- Broken glass is a real problem
- Community facility at Faughan Valley School
- Flags and painting of kerbs
- Lack of sufficient parking
- Too many pets per property
- Traffic calming required
- Too much private development - where no facilities for current properties exist

## **SECTION 3**

### **3.0 THE WAY FORWARD**

The Survey findings have highlighted a number of areas where residents in the Drumahoe area feel there is a need for action.

Before further action is taken in response to the issues highlighted the Steering Group aim to form a constituted Community/Residents Group.

This group will be committed to working for the benefit of all residents of the area and to build meaningful partnerships to ensure that the challenges identified are overcome. This opportunity will be used to approach the appropriate agencies both statutory and voluntary to obtain the necessary assistance.

## SECTION 4

### 4.0 PLAN OF ACTION

	ISSUES	AGENCY
<b>HOUSING:</b>	<b>Troublesome Tenants</b> Liaise with appropriate agency to ensure follow up action is taken where tenants are in breach of their tenancy agreement.	D.C.C./ P.S.N.I./ N.I.H.E.
	<b>Vandalism to Property</b> Liaise with N.I.H.E. and P.S.N.I. to minimise level of vandalism to occupied dwellings.	D.C.C./ N.I.H.E./ P.S.N.I.
	<b>Maintenance</b> Liaise with relevant agency to ensure maintenance is carried out within time scale and standard adhered to.	D.C.C./ D.R.D./ N.I.H.E.
<b>SOCIAL:</b>	<b>Play Area</b> Liaise with Derry City Council to provide a local Play Area and also with N.I.H.E. re: available ground.	N.I.H.E./ D.C.C.
	<b>Lack of Weekend Policing</b> Liaise with P.S.N.I. to highlight problem times and areas.	P.S.N.I.
	<b>Anti-Social Behaviour</b> Liaise with all relevant agencies to minimise anti-social behaviour in the area.	Various
	<b>Drug Problems</b> Liaise with P.S.N.I. where appropriate in relation to illegal drug activity and associated problems.	P.S.N.I.

	<b>ISSUES</b>	<b>AGENCY</b>
<b>Social cont'd</b>	<p><b>Lack of Youth Activities</b> Investigate the possibility of establishing a local facility</p>	Various
	<p><b>Education Classes/Amenities</b> Liaise with all relevant agencies to develop programmes.</p>	Various
	<p><b>Health Programmes</b> Liaise with Health Board to develop programmes.</p>	Various
	<p><b>Community Safety Initiatives</b> Investigate the possibility of developing estate based initiatives.</p>	Various
	<p><b>Facilities for Senior Citizens</b> Liaise with appropriate agencies to tackle lack of facilities/activities.</p>	Various
	<p><b>Increased P.S.N.I. Patrols</b> Highlight problem times and areas, liaise with P.S.N.I.</p>	P.S.N.I.
<b>ENVIRONMENTAL:</b>	<p><b>Speeding/Road Safety</b> Investigate the possibility of introducing traffic calming measures within the area with P.S.N.I. (Traffic) and D.R.D (Roads).</p>	P.S.N.I./ D.R.D.
	<p><b>Dog Fouling</b> Liaise with Derry City Council to alleviate the problem throughout the area.</p>	D.C.C.
	<p><b>Footpaths</b> Liaise with D.R.D. (Roads) to ensure problematic areas are improved. Liaise with D.C.C. and N.I.H.E. as appropriate to ensure areas are swept regularly.</p>	D.R.D./ N.I.H.E./ D.C.C.

	<b>ISSUES</b>	<b>AGENCY</b>
<b>Environmental cont'd</b>	<b>Road Gritting</b> Liaise with D.R.D. to ensure provision of salt bins.	D.R.D.
	<b>Illegal Dumping</b> Liaise with D.C.C. to alleviate nuisance and health problems associated with this.	D.C.C.
	<b>Bus Service</b> Investigate possibility of introducing Busy Bus stops within the area.	Translink
	<b>Bus Shelters</b> Liaise with D.C.C. to site Bus Shelters.	D.C.C.
	<b>Graffiti</b> Liaise with N.I.H.E. and D.C.C. to ensure graffiti removed where appropriate.	N.I.H.E./ D.C.C.
	<b>Litter Bins</b> Liaise with D.C.C. to site litter bins in problematic areas.	D.C.C.
	<b>Overall appearance of the estate</b> Investigate ways of improving the general appearance of the estate.	Various
<b>ECONOMIC:</b>	<b>Facilities for the Unemployed</b> Liaise with appropriate agencies to introduce services.	Various
<b>FUNDING:</b>	Liaise with various funders to ensure projects identified can be pursued.	Areas
<b>GENERAL:</b>	Community Spirit/Civic Pride by pursuing the entire Action Plan and ensuring Community Involvement, Community Spirit and Civic Pride will increase.	